



27 CARDIFF STREET, ABERDARE, CF44 7DP

TEL: 01685 878000 FAX: 01685 878000



Cardiff Road

Aberaman, Aberdare, CF44 6TP

£159,995

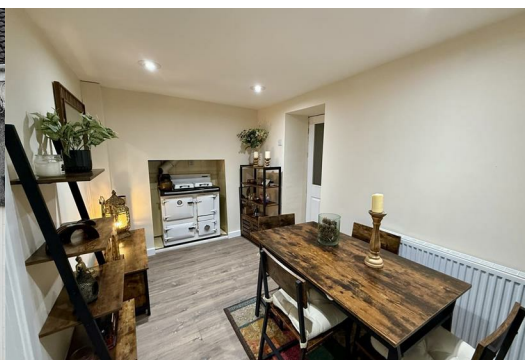


Nestled on Cardiff Road in Aberdare, this charming terraced house presents an excellent opportunity for first-time buyers, families, or those looking to downsize. The property boasts three well-proportioned bedrooms, providing ample space for comfortable living. With two inviting reception rooms and a dining room, there is plenty of room for relaxation and entertaining guests.

One of the standout features of this home is the delightful sun-filled garden, which is perfect for enjoying the outdoors. The garden also includes a quaint summer house complete with a bar, making it an ideal spot for summer gatherings or simply unwinding after a long day.

The location is particularly advantageous, offering convenient links to local schools and transport options, ensuring that daily commutes and family needs are easily met. This property truly embodies a perfect blend of comfort and practicality.

Do not miss the chance to view this beautiful home, as it is sure to attract considerable interest. Whether you are starting your journey into homeownership or seeking a peaceful retreat, this property is not to be overlooked.



Entrance Hall

Composite front door. Radiator.

Reception Room 1 14'00 x 12'00 (4.27m x 3.66m)

UPVC double glazed window to front. Radiator. Electric fire.

Reception Room 2/Dining Room 12'00 x 7'04 (3.66m x 2.24m)

Radiator. Aga oven.

Reception Room 3 13'06 x 8'06 (4.11m x 2.59m)

UPVC sliding doors to rear. Radiator.

Utility Room 7'05 x 7'01 (2.26m x 2.16m)

Floor and wall mounted units. Provisions for washer/dryer and fridge/freezer.

WC

Ground floor WC with handwash basin. Hand dryer.

Kitchen

UPVC double glazed windows to rear. Induction hob. Integrated oven. Provisions for fridge/freezer. Belfast kitchen sink.

Landing

Bedroom 1 12'02 x 9'06 max x 6'09 min (3.71m x 2.90m max x 2.06m min)

UPVC double glazed window to front. Radiator.

Bedroom 2 12'02 x 9'04 (3.71m x 2.84m)

UPVC double glazed window to front. Radiator.

Bedroom 3 10'06 x 7'10 (3.20m x 2.39m)

UPVC double glazed window to rear. Radiator. Attic trap.

Family Bathroom 8'01 x 7'08 (2.46m x 2.34m)

UPVC double glazed window to rear. Heated towel rail. Corner Bath. Separate shower. Handwash basin. WC.

Outside

Summer house. Patio. Artificial grass.

Disclaimer

N.B Whilst these particulars are intended to give a fair description of the property concerned, their accuracy is not guaranteed and any intending purchaser must satisfy himself by inspection or otherwise, as to the correctness of statements contained herein.

The particulars do not constitute an offer or contract, and statements herein are made without responsibility, or warranty on the part of the Vendor or Manning Estate Agents, neither of whom can hold themselves responsible for expenses incurred should the property no longer be available. Items shown in photographs are NOT included unless specifically mentioned in particulars. They may however be available by separate negotiation.

The Property Misdescription Act 1991

The Agent has not tested any apparatus, equipment, fixtures and fittings or services and so cannot verify that they are in working order or fit for the purpose. A buyer is advised to obtain verification from their Solicitor or Surveyor. References to the Tenure of the property are based on information supplied by the seller. The Agent has not sight of the title documents. A Buyer is advised to obtain verification from their Solicitor.

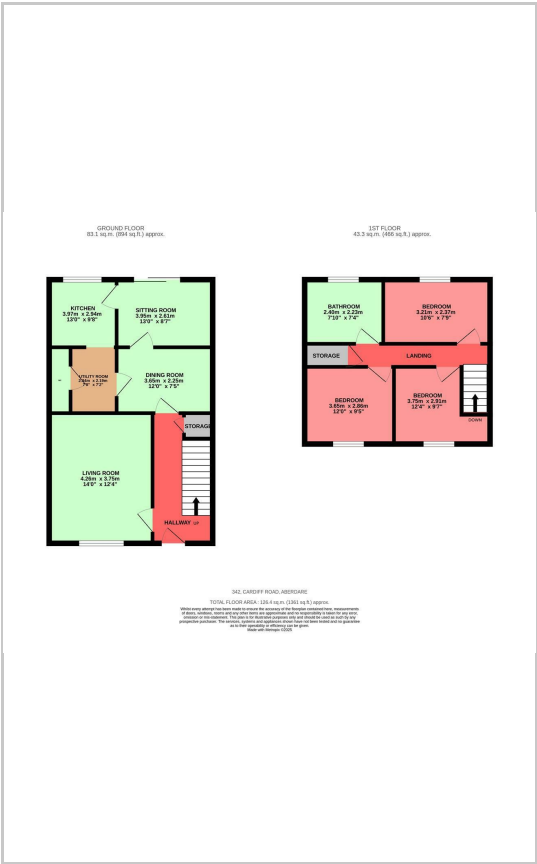
You may download, store and use the material for your own personal use and research. You may not republish, retransmit, redistribute or otherwise make the material available to any party or make the same available on any website

These particulars, whilst believed to be accurate are set out as a general outline only for guidance and do not constitute any part of an offer or contract. Intending purchasers should not rely on them as statements of representation of fact, but must satisfy themselves by inspection or otherwise as to their accuracy. No person in this firms employment has the authority to make or give any representation or warranty in respect of the property.

Area Map



Floor Plans



Energy Efficiency Graph

